



PANCREATIC
CANCER EUROPE

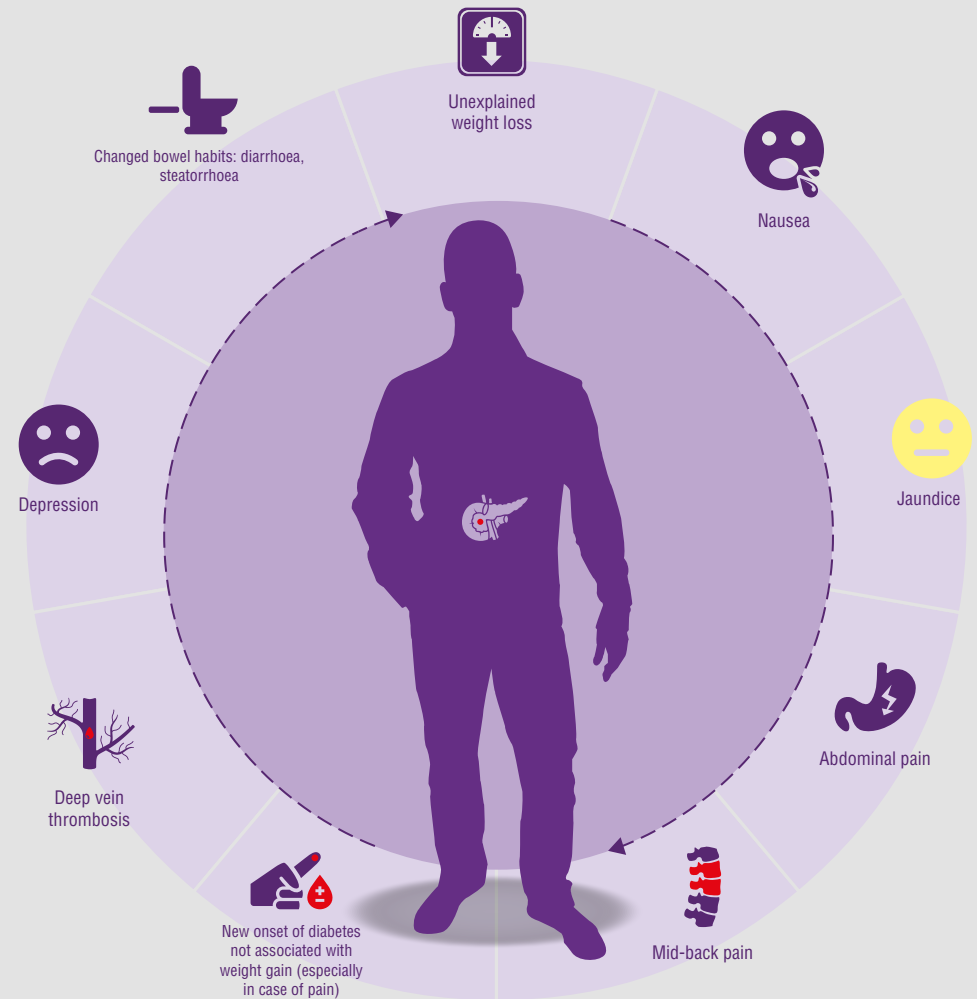
This awareness document was developed by Pancreatic Cancer Europe
(www.pancreaticcancereurope.eu).

© 2016 ASBL Pancreatic Cancer Europe - All partial or total
reproduction of the content is prohibited without the authorization
of PCE secretariat, Rue Guimard 10, 1040 Bruxelles,
ASBL/VZW 656.553.804



PANCREATIC
CANCER EUROPE

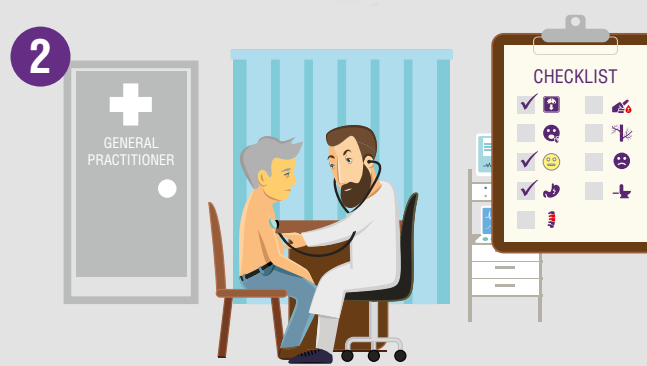
THE 10 WARNING SIGNS OF PANCREATIC CANCER



PANCREATIC CANCER: A PATIENT'S JOURNEY, FROM THE FIRST SYMPTOM TO DIAGNOSIS



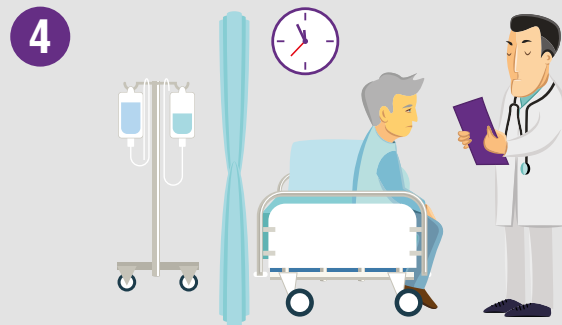
IF THE SYMPTOMS ARE LITTLE SPECIFIC



BUT THAT OTHER LEADS HAVE BEEN RULED OUT



IT IS IMPORTANT TO HAVE THE GOOD REFLEXES



BECAUSE THE SPEED OF DIAGNOSIS
IS CRITICAL TO THE PROGNOSIS

103 773
NEW CASES PER YEAR IN EUROPE ¹

103 773 NEW CASES ARE NUMBERED EVERY YEAR IN EUROPE WHILE PANCREATIC CANCER'S PREVALENCE IS INCREASING. WE MUST REACT FASTER TO ENCOURAGE AN EARLY DIAGNOSIS AND A BETTER CHANCE OF SURVIVAL.

THINK PANCREATIC CANCER!

Source :

¹ Ferlay J, Steliarova-Foucher E, Lortet-Tieulent J, Rosso S, Coebergh JWW, Comber H, Forman D, Bray F. Cancer incidence and mortality patterns in Europe: estimates for 40 countries in 2012. Eur J Cancer. 2013 Apr;49(6):1374-403. doi: 10.1016/j.ejca.2012.12.027. <http://eco.iarc.fr/eucan/Cancer.aspx?Cancer=15#block-table-a> [Last accessed March 2017]